

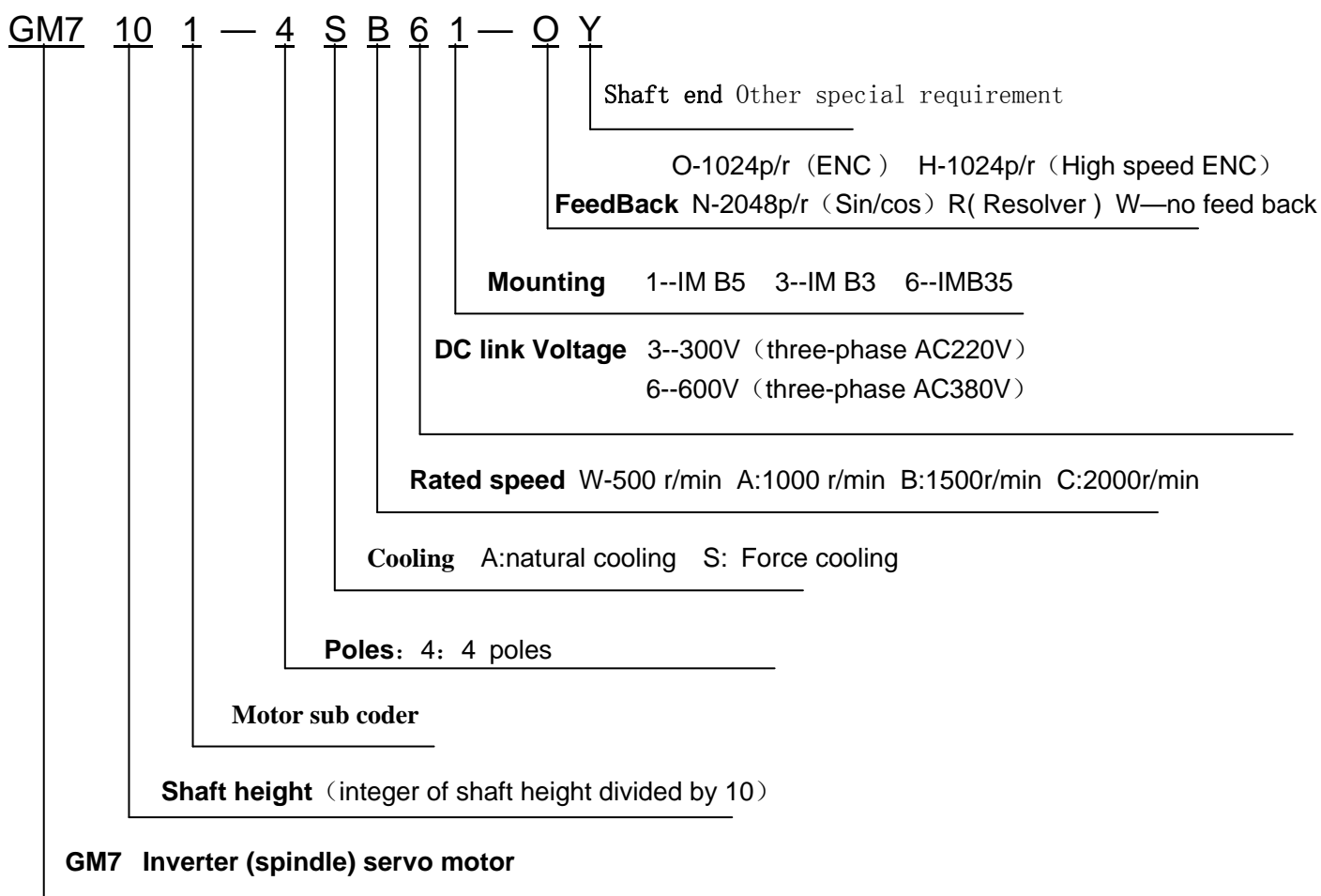
GM7Asynchronous Servo Motor

It can adapt with lots of variable types high performance inverters or spindle drivers. It can be used on both Close loop or Open loop system. The performance is absolutely different with normal inverter motor. It is used on numerical machine tools. Building material machinery, plastic machinery, textile machinery, heavy industry, such as metal, etc.

GM7 inverter (spindle) motor, it is composed with stator, rotors, low noise force cooling fan, high resolution encoder (no necessary under open loop control). It is optimized in structure design, optimized in magnet route design. The features as follow:

- compact design, smaller body, lighter weight, high energy density
- Special design for electronics-magnet vibration, low noise, high rotation resolution, enough constant speed range and constant power range
- low inertia high response
- Even air-gap, high balancing resolution, low torque wave
- Full sealed design, Protection Class : Ip54
- Special Class F insulation, anti-surge current & corona.
- Robust, durable, reliable;
- Good price based on strong performance.

Type Specification

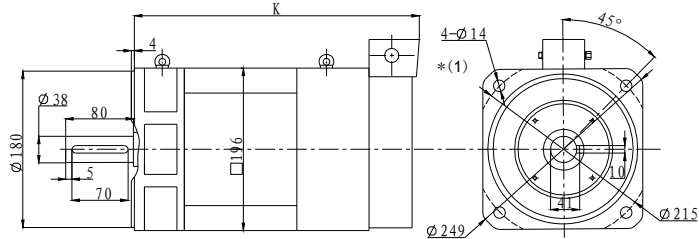


Technical Specification

Motor Type	Inverter (spindle motor) (AC induction motor)
Insulation Class	Class F, Special insulation design
Feed Back	Incremental & Sin/Cos, Resolver
Temperature protection	PTC positive coefficient temperature sensor
Force cooling fan Encoder connection	Terminal box Circle plug and socket
Mounting Protection Class Cooling Painting	IM B5 、 IM B3 、 IM B35 IP54 Optional : IP55 Force cooling fan Gray without gloss, other: optional
Bearing Shaft end	Deep groove ball bearing, seals on both sides Standard : with keyway and key, or according customer requirement
Vibration class Rotation resolution	Class N optional : Class R Class N optional : Class R
Noise	Shaft height 100-132 ≤ 70 d B (A) Shaft height 180 ≤ 76 d B (A) Shaft height 225 ≤ 77 d B (A)

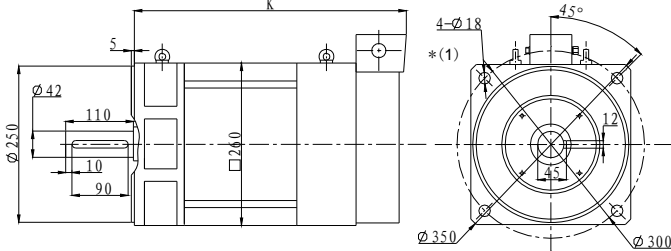
Spindle Motor Dimension

GM710 IM B5 Dimension



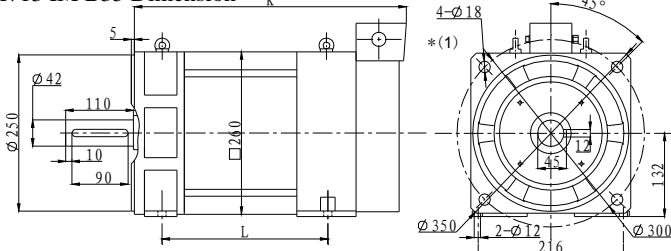
type	K
GM7100	360
GM7101	405
GM7102	360
GM7103	405
GM7105	500
GM7107	500
GM7109	540

GM713 IM B5 Dimension



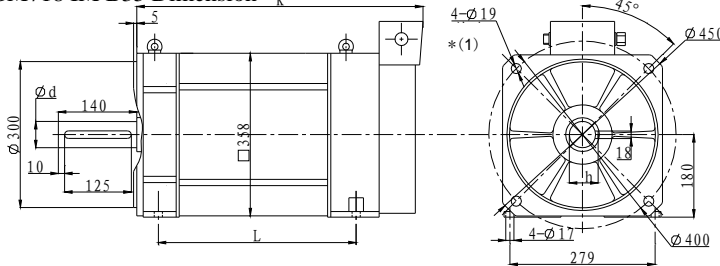
type	K
GM7130	430
GM7131	510
GM7132	430
GM7133	510
GM7135	595
GM7137	595

GM713 IM B35 Dimension



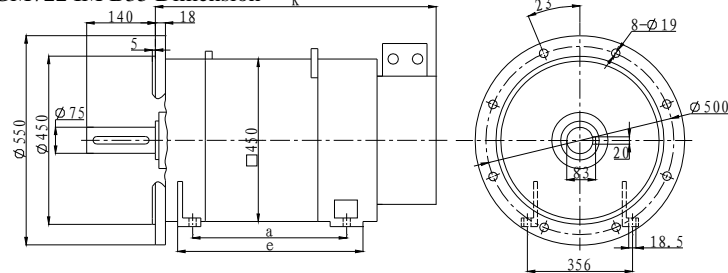
type	K	L
GM7130	430	180
GM7131	510	260
GM7132	430	180
GM7133	510	260
GM7135	595	345
GM7137	595	345

GM718 IM B35 Dimension



type	K	L	d	h
GM7181	713	371	60	64
GM7183	748	406	60	64
GM7185	818	476	60	64
GM7187	908	566	65	69
GM7189	958	616	65	69

GM722 IM B35 Dimension



type	K	a	e
GM7221	960	445	540
GM7223	960	445	540

*(1) even distribution

Technical Data

Type	Rated Power Kw	Rated Torque Nm	Rated Current A	Rated Current r/min	n max r/min	Inertia Kgm ²	Weight Kg
GM7100-4SB61	2.2	14	6	1500	6000/9000	0.015	25
GM7101-4SB61	3.7	23.6	10	1500	6000/9000	0.02	35
GM7102-4SB61	3.0	19.1	8	1500	6000/9000	0.015	25
GM7103-4SA61	3.7	35.3	10	1000	6000/9000	0.02	35
GM7103-4SB61	5.5	35	13	1500	6000/9000		
GM7103-4SC61	7.5	35.8	18.8	2000	6000/9000		
GM7105-4SB61	7.5	47.8	18.8	1500	6000/8000	0.032	55
GM7107-4SA61	6.3	60.2	19.4	1000	6000/8000	0.032	55
GM7107-4SB61	9	57.3	23.5	1500	6000/8000		
GM7107-4SC61	10.5	50.1	26	2000	6000/8000		
GM7109-4SB61	11	70	25	1500	6000/8000	0.037	64
GM7130-4SB61	5. 5	35	13	1500	6000/8000	0.042	78
GM7131-4SB61	11	70	24	1500	6000/8000	0.076	93
GM7132-4SB61	7.5	47.8	18.8	1500	6000/8000	0.042	78
GM7133-4SA61	12	114.6	30	1000	6000/8000	0.076	93
GM7133-4SB61	15	95.5	34	1500	6000/8000		
GM7133-4SC61	20	95.5	45	2000	6000/8000		
GM7135-4SB61	18.5	117.8	42	1500	6000/8000	0.109	133
GM7137-4SA61	17	162.3	43	1000	6000/8000	0.109	133
GM7137-4SB61	22	140.1	57	1500	6000/8000		
GM7137-4SC61	28	133.7	50	2000	6000/8000		
GM7181-4SW61	12	229.2	30	500	6500	0.3	310
GM7181-4SA61	22	210.1	55	1000	6500		
GM7181-4SB61	30	191	72	1500	6500		
GM7183-4SW61	16	305.6	37	500	6500	0.37	336
GM7183-4SA61	28	267.4	71	1000	6500		
GM7183-4SB61	37	235.5	82	1500	6500		

Type	Rated Power Kw	Rated Torque Nm	Rated Current A	Rated Current r/min	n max r/min	Inertia Kgm ²	Weight Kg
GM7185-4SW61	22	420	76	500	5000	0.45	390
GM7185-4SA61	39	372	90	1000	5000		
GM7185-4SB61	51	325	120	1500	5000	0.45	390
GM7187-4SW61	30	565	105	500	5000	0.67	460
GM7187-4SA61	51	487	118	1000	5000		
GM7187-4SB61	65	414	135	1500	5000		
GM7189-4SW61	36	688	79	500	5000	0.77	499
GM7189-4SA61	60	573	132	1000	5000		
GM7189-4SB61	75	478	165	1500	5000		
GM7221-4SA61	71	678	164	1000	4500	1.48	650
GM7221-4SB61	100	636	188	1500	4500		

Remark:

1. You can feedback us the special requirement, according with your machinery, such as power, speed etc. We can supply a particular motor for you.

2. " *" maximum speed and motor data related with encoder.
15,000rpm based on the encoder from Germany, 6,000rpm based on the encoder from Asia.

CNCmakers

www.CNCmakers.com
info@CNCmakers.com